



Welcome from  
the Dean of  
Graduate Studies

Fáiltiú ón Déan  
an Léinn  
Iarchéime







# This Session

---

The University

---

Your School

---

The Office of the Dean of Graduate Studies

---

The Structured PhD

---

*The Postgraduate Renewal Programme*



##/##

Join at: [vevox.app](https://vevox.app)

ID: 192-045-690

Question slide

# Are you registered for a taught or a research degree?

Full time taught programme (e.g., MSc., MPhil, PGDip)

0%

Full time research degree (e.g., PhD, Professional doctorate, MLitt)

0%

Part time taught programme

0%

Part time research degree

0%



##/##

Join at: [vevox.app](https://vevox.app)

ID: 192-045-690

Preparing Results

# Are you registered for a taught or a research degree?

Full time taught programme (e.g., MSc., MPhil, PGDip)

0%

Full time research degree (e.g., PhD, Professional doctorate, MLitt)

0%

Part time taught programme

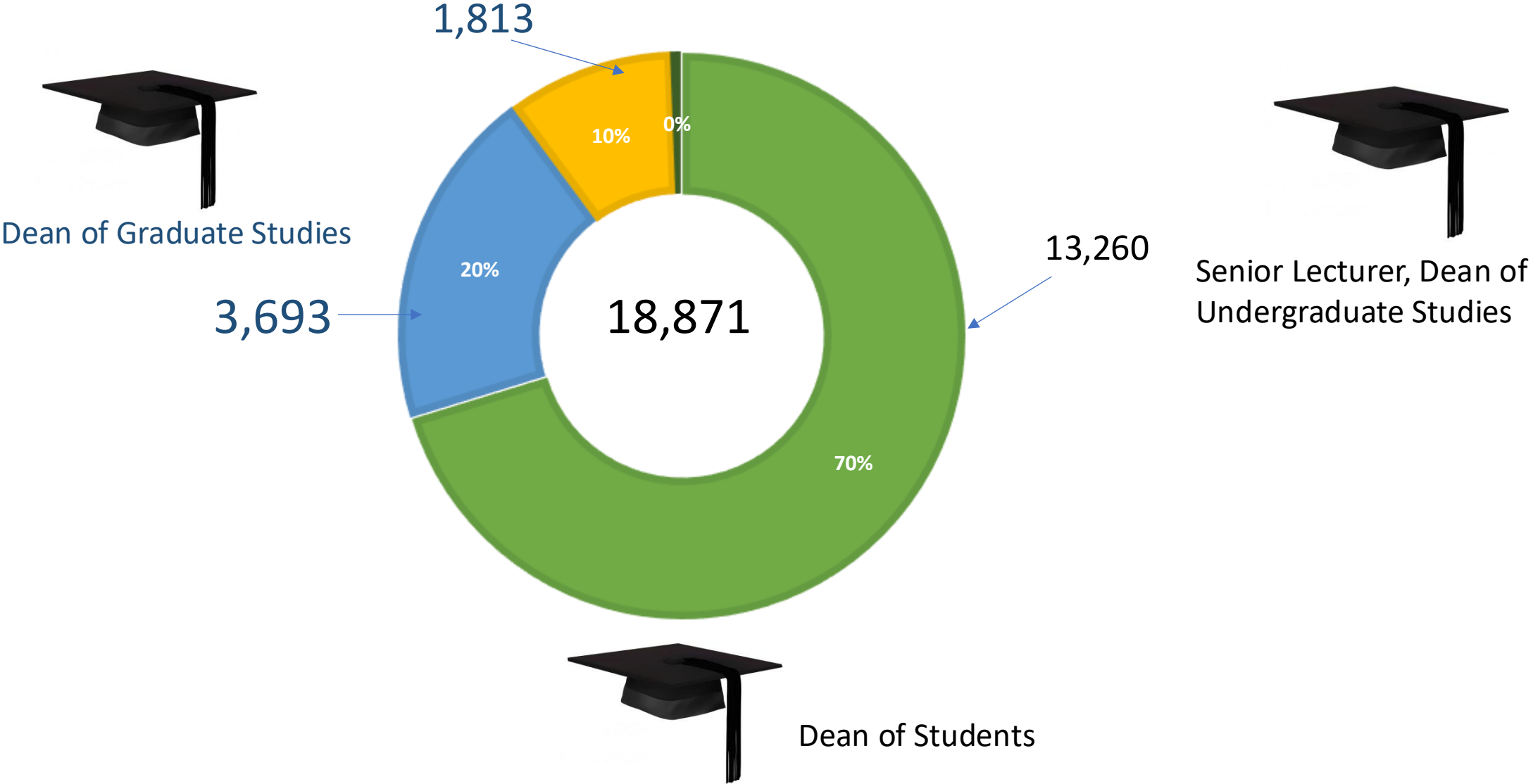
0%

Part time research degree

0%

# STUDENT BODY

■ Undergraduate ■ Postgraduate taught ■ Postgraduate research ■ Foundation







0/0

Join at: [vevox.app](https://vevox.app)

ID: 192-045-690

Question slide

# What is your country of residence?





0/0

Join at: [vevox.app](https://vevox.app)

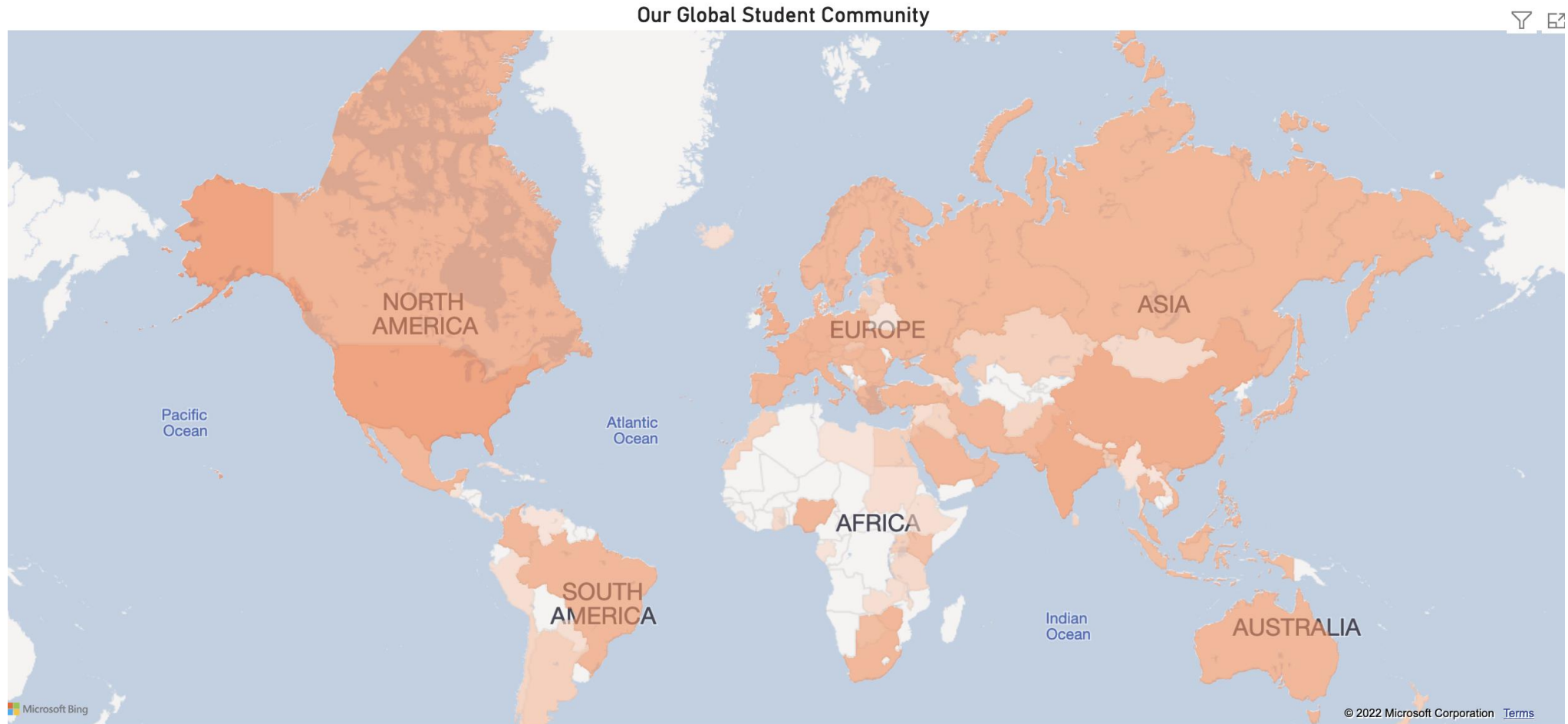
ID: 192-045-690

Preparing Results

# What is your country of residence?



# Our global student community - >6,000 students







0/0

Join at: [vevox.app](https://vevox.app)

ID: 192-045-690

Question slide

Why did you chose to study at Trinity?



0

Join at: [vevox.app](https://vevox.app)

ID: 192-045-690

Preparing Results

# Why did you chose to study at Trinity?



##/##

Join at: [vevox.app](https://vevox.app)

ID: 192-045-690

Question slide

How are you feeling about being back in university?





##/##

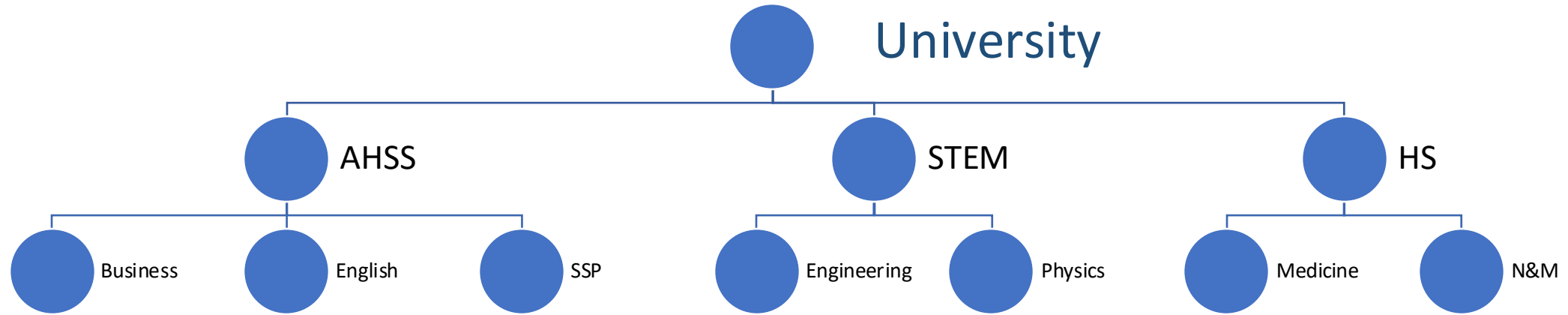
Join at: [vevox.app](https://vevox.app)

ID: 192-045-690

Results slide

How are you feeling about being back in university?

# Trinity's Triple I commitment: Interdisciplinary, International, Intersectoral



## 12 Schools:

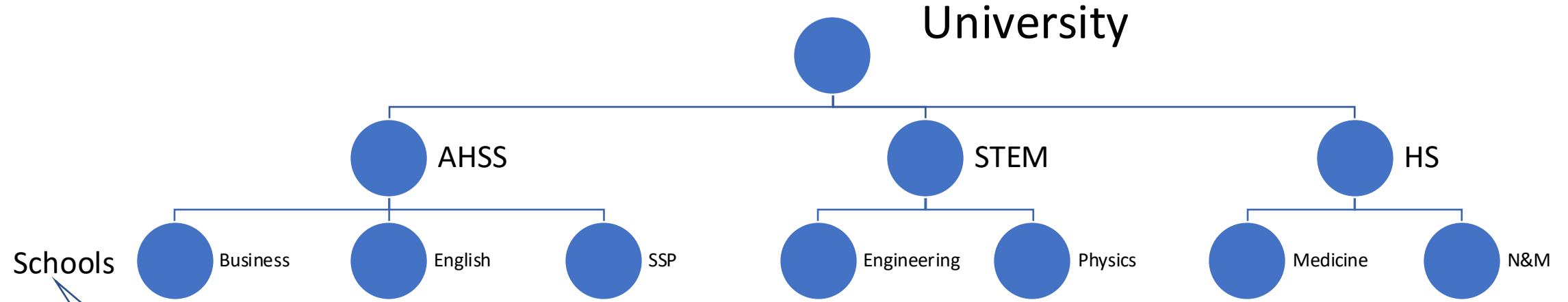
- Business;
- Creative Arts;
- Education;
- English;
- History & Humanities;
- Languages, Literature & Cultural Studies;
- Law;
- Linguistic, Speech & Communication Sciences;
- Psychology;
- Religion, Theology, & Peace Studies;
- Social Science & Philosophy;
- Social Work & Social Policy.

## 6 Schools:

- Biochemistry & Immunology;
- Chemistry;
- Computer Science & Statistics;
- Engineering;
- Genetics & Microbiology;
- Mathematics;
- Natural Sciences;
- Physics

## 4 Schools:

- Dental Science
- Medicine
- Nursing & Midwifery
- Pharmacy & Pharmaceutical Sciences



Schools

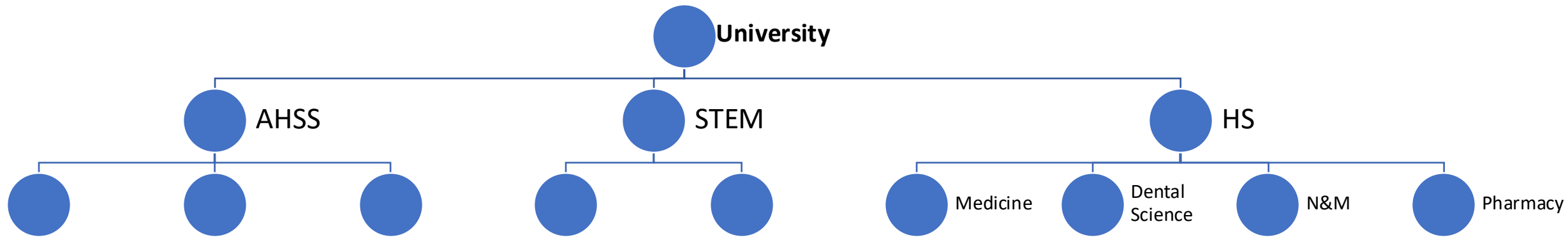
**Director of Postgraduate Teaching and Learning**

- Coordinator of PhD/Research Students
  - Course Office

Supervisor(s)  
Thesis committee\*  
Research group

**School Appeal Committee**





**Schools**

**Director of Postgraduate Teaching and Learning**

- Coordinator of PhD/Research Students

***Taught courses***

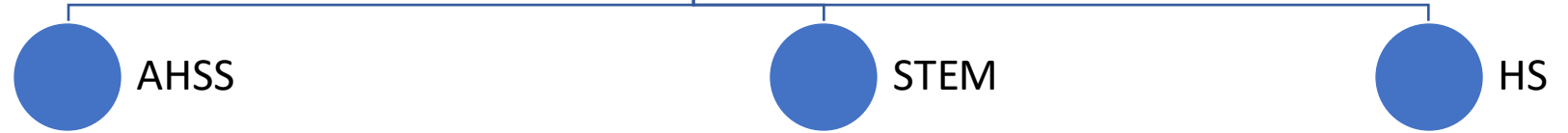
Course coordinator

Course committee

**School Appeal Committee**

# University

Dean of Graduate Studies  
Graduate Studies Office



Schools



Business



English



SSP



Engineering



Physics



Medicine



N&M

Postgraduate  
Advisory  
Support Service

Health  
Services

Students'  
Union

Student  
Counselling

Global  
Engagement

Academic  
Registry

Student  
Learning &  
Development

DisAbility  
Services

Careers



## Graduate Studies

Menu Home About Us Current Students Prospective Students Staff Resources Postgraduate Renewal Contact

POSTGRADUATE STUDENTS



Postgraduate Taught Students



More



Postgraduate Research Students



More

I need help with:

My Studies



My Finances



My Professional Development



My Wellbeing



Regulations and Policies



<https://www.tcd.ie/graduatestudies/>



## Current Students

Deans Monthly Updates

Postgraduate Taught Students >

Postgraduate Research Students v

Academic Appeals

Academic Standing

Assessment and Progression

Conflict in Supervision

Professional Development

Structured PhD Modules

Supervision

Thesis Submission

Travel Grant

Viva Voce Examination

CURRENT STUDENTS / POSTGRADUATE RESEARCH STUDENTS

## Postgraduate Research Students

Research students are a vital part of our University's research ecosystem. There are many resources to help you in your research journey, including guidance on your academic progress, supervision, information on the taught modules you need to take as part of the Structured PhD, funding for research-related travel, and forms for special requests. If you cannot find the information you need in the links on this page, please contact [genadgso@tcd.ie](mailto:genadgso@tcd.ie).



Annual Review



Confirmation on PhD Register



Off-books Requests



[genadgso@tcd.ie](mailto:genadgso@tcd.ie)

## Current Students

### Deans Monthly Updates

### Postgraduate Taught Students ▾

Academic Appeals

Examinations and Assessment

Submission of Dissertations

### Postgraduate Research Students >

CURRENT STUDENTS / POSTGRADUATE TAUGHT STUDENTS

## Information for Postgraduate Taught Students

Students on our Postgraduate Taught Programmes can find information on Fees and Registration, Exams, the University Calendar and Thesis Submission in the sections below.



### Fees and Registration

Fees must be paid prior to registration. You will not be able to register until fees have been received.

Read more: [Academic Registry - Fees & Payment](#).

Registration is mandatory for every student on an annual basis. It cannot be completed until any debts owed to the College have been paid and until fees for the forthcoming year have been paid, or pledged as payable by an education authority. Late registration and replacement charges will be enforced unless ad misericordiam grounds are presented to the Dean of Graduate Studies and confirmed with documentation.

Read more: [Academic Registry - Registration](#).

### Calendar

The University of Dublin Calendar outlines the regulations for students. It is important for postgraduate students to read and understand the specific regulations for your taught course or programme. Part III of the Calendar deals with both general and course specific regulations for postgraduate study (taught and research). [Read More](#).

# Finding information...

Calendar

Menu Home General Information Undergraduate Studies Graduate Studies and Higher Degrees

Current Calendar

General Information

Undergraduate Studies

Graduate Studies and Higher Degrees

CURRENT CALENDAR / GRADUATE STUDIES AND HIGHER DEGREES

## Graduate Studies and Higher Degrees - Part III

Part III of the Calendar contains information about graduate studies, higher degrees and other general information

### 2023 - 24 Calendar Part III

Part III - Graduate Studies and Higher Degrees (complete book version) >

#### Chapters

Part I - General Information >

Section I - General Academic Regulations for Graduate Studies and Higher Degrees >

Section II - Regulations for Higher Degrees by Research Only >

Section III - General Regulations for Taught Graduate Programmes >

Section IV - Regulations for Professional Higher and Other Degrees >

Section V - Other General Regulations >

Section VI - Specific Regulations for Taught Graduate Programmes, Faculty of Arts, Humanities and Social Sciences >

Section VII - Specific Regulations for Taught Graduate Programmes, Faculty of Health Sciences >

Section VIII - Specific Regulations for Taught Graduate Programmes, Faculty of Science, Technology, Engineering and Mathematics >

Section IX - Non-Faculty Programmes >

## Postgraduate Advisory Support Service

- Local School handbook
- Course Director
- Research supervisor
  - Thesis committee
- Director of PG Teaching & Learning
- Head of School
- Dean of Graduate Studies

Students' Union  
Aontas Mac Léinn



# Trinity College Dublin Students' Union

## Class Representative Elections 24/25



TRINITY COLLEGE DUBLIN  
**STUDENTS' UNION**

[TCDSU.ORG](https://www.tcdsu.org) [TCDSU](https://www.facebook.com/tcdsu) [@TCDSU](https://www.instagram.com/tcdsu) [TCDSU](https://www.youtube.com/tcdsu)

# Run for Class Representative

**What is a Class Rep?  
Why should I run?  
How do I nominate myself?**

---

**Scan the QR  
Code to find out!**



TRINITY COLLEGE DUBLIN  
**STUDENTS' UNION**

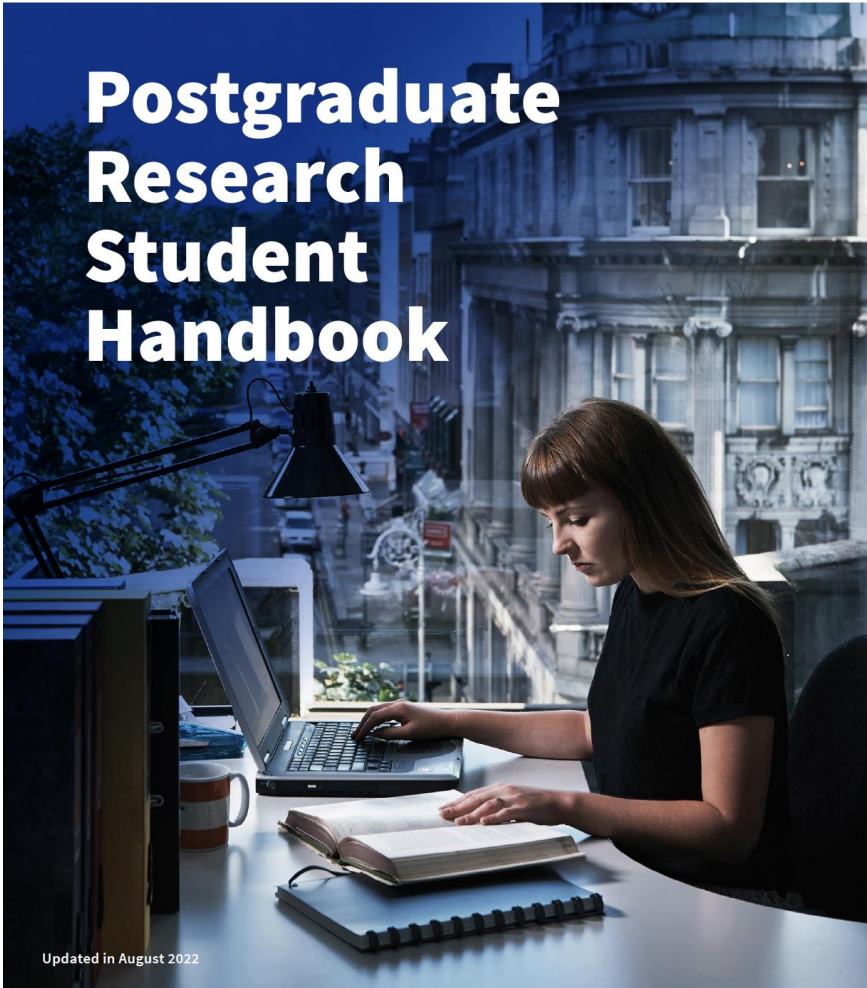
[TCDSU.ORG](https://www.tcdsu.org) [f](#) TCDSU [@](#) TCDSU [v](#) TCDSU





**Trinity College Dublin**  
Coláiste na Tríonóide, Baile Átha Cliath  
The University of Dublin

# Postgraduate Research Student Handbook

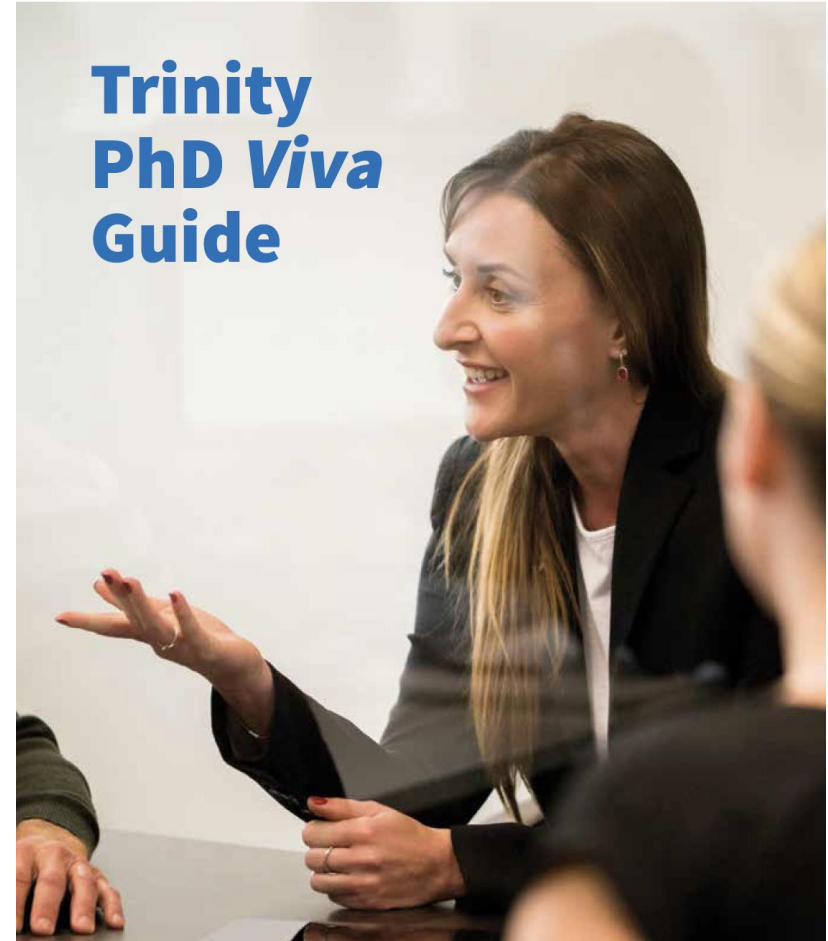


Updated in August 2022



**Trinity College Dublin**  
Coláiste na Tríonóide, Baile Átha Cliath  
The University of Dublin

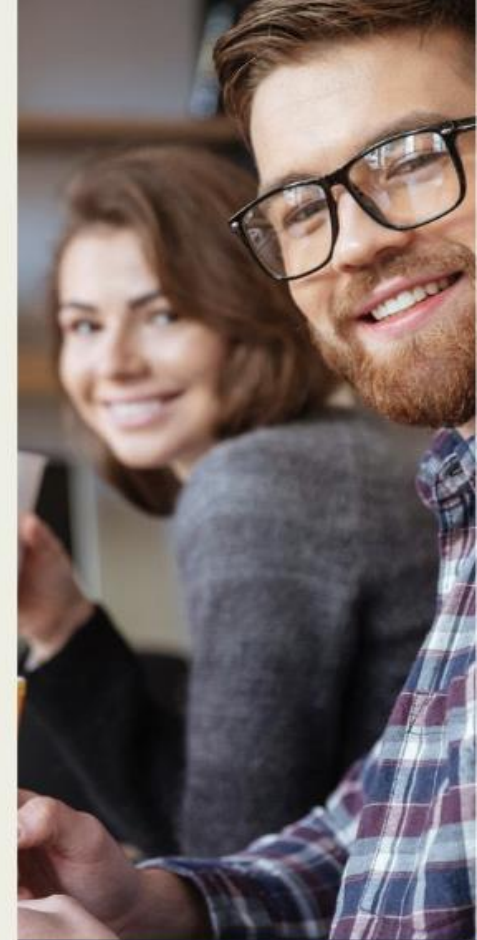
# Trinity PhD *Viva* Guide



# National Framework for Doctoral Education

- <https://hea.ie/assets/uploads/2023/02/National-Framework-for-Doctoral-Education-2023.pdf>

**Revised 2023**





01  
**Welcome from the  
Provost and the Dean  
of Graduate Studies**

Page 7



02  
**Introduction to the  
Office of the Dean of  
Graduate Studies**

Page 10



03  
**The Nature of a Trinity  
PhD - Researching  
in a Research Led  
Institution**

Page 12



04  
**The Structured PhD**

Page 16



05  
**The Supervision  
Relationship**

Page 28



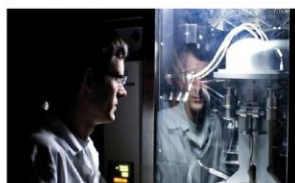
06  
**Plagiarism**

Page 35



07  
**E-Thesis Submission  
and Open Access**

Page 37



08  
**Thinking Outside the  
Box – Extra Curricular  
Activities and the GSU**

Page 39



09  
**Support Services  
for Graduate Students**

Page 43



10  
**The aims of a Trinity  
PhD Student**

Page 49





- Research at its core
- Supported by taught elements
- Structured according to deadlines and gateway stages



04

## The Structured PhD

Page 16



# Key elements to plan for

---

- Agree thesis committee membership
  - How is the thesis committee going to work for you?
- Know your credit requirements! (min 10ECTS, max 30ECTS; CA7000)
- **Annual** progress review report
- Confirmation process (at 18 months for FT)
- Supervision
- Teaching and learning activities
- Break time!

### Supervisor - Research Student Agreement

The Supervisor - Research Student Agreement outlines roles and responsibilities of postgraduate research students and supervisor(s) and is designed to act as a prompt for discussions between the student and supervisor(s) on their expectations of each other within the supervisory relationship. It draws on relevant [University policies](#), some of which are linked in the [Relevant College Policies](#) section at the end of the agreement document.

The aim of the agreement is to facilitate the establishment of an effective partnership between a supervisor and a research student from the start. As it is a living document, it should be reviewed and updated at the start of each academic year but can be re-visited more frequently if necessary or appropriate.

Good communication between the student(s) and supervisor(s) is crucial to managing relationships and [maximising](#) opportunities for successful collaboration. The agreement should be discussed and jointly completed by a research student and the supervisor. It may be adapted, if required, for individual research projects to suit the requirements of the project, [student](#) and supervisor(s). There are no compulsory elements, but it is recommended that each section (Academic Development; Managing the Relationship; Professional Development and Wellbeing and Health) is considered. Key areas for discussion and agreement are suggested at the end of the document.

Before using this document, supervisors are advised to familiarise themselves with [Trinity's Supervision of Research Students Best Practice Guidelines](#) (under review). Students and supervisors are also advised to [familiarise](#) themselves with their School's Handbook for Postgraduate Students as well as the Office of the Dean of Graduate Studies [Postgraduate Research Student Handbook](#) (currently under review).<sup>1</sup>

#### Student / Supervisor Details

Name of Registered Student:	
School where Registered:	
Title of Research Project:	
Name of Primary Supervisor:	
Academic Year:	

<sup>1</sup> This document is provided by the Office of the Dean of Graduate Studies for guidance purposes only. It should be adapted for individual research projects to suit the requirements of the project, student and supervisor(s). Nothing in this plan should be construed as an intention to create legal relations.

### ROLES AND RESPONSIBILITIES

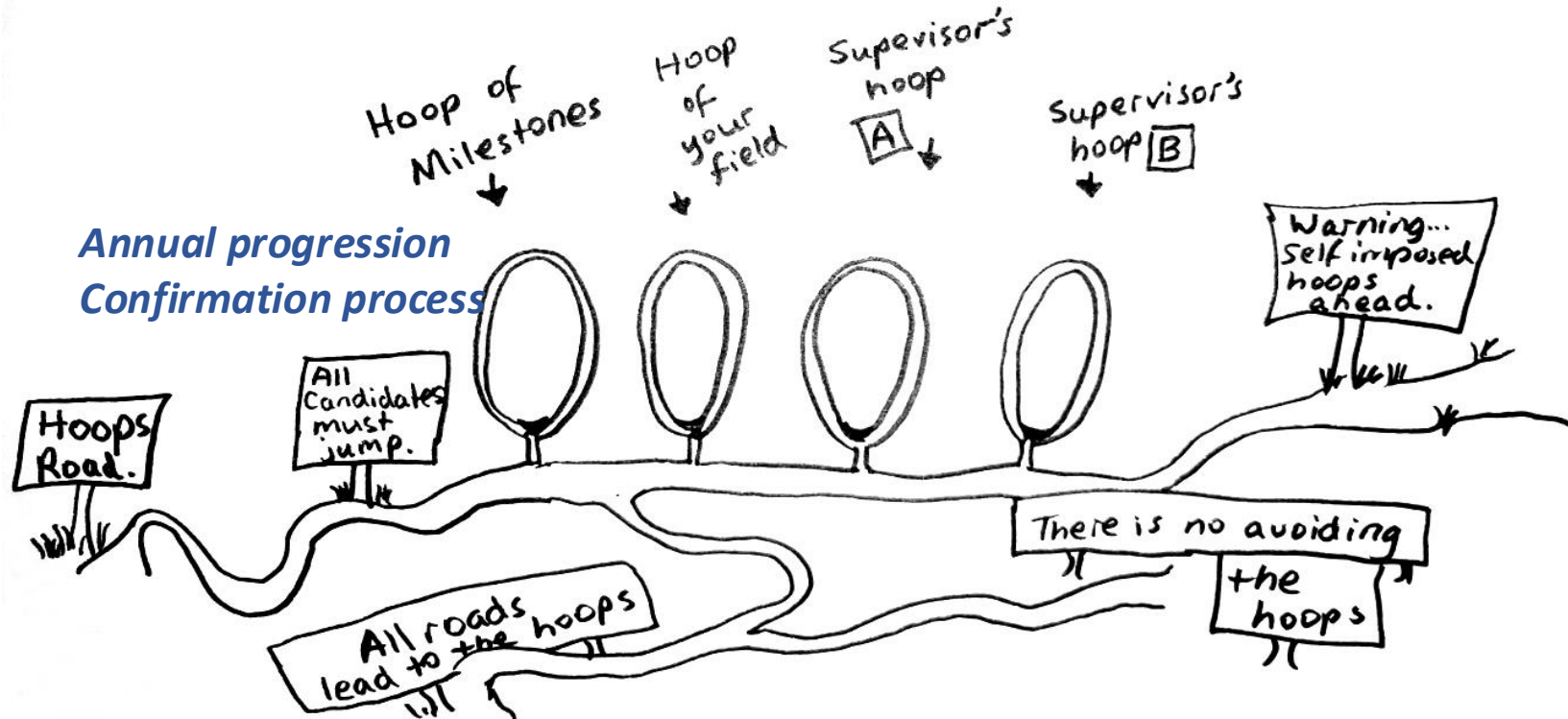
#### Academic Development

Student	Supervisor
<ul style="list-style-type: none"> <li>Attend <a href="#">college-level orientation</a> and review all relevant PG orientation materials available on the <a href="#">Student Life webpages</a>.</li> </ul>	<ul style="list-style-type: none"> <li>Facilitate attendance at orientation and encourage students to review all relevant PG orientation materials available on the <a href="#">Student Life webpages</a>.</li> <li>Facilitate attendance at relevant workshops or <a href="#">programmes</a>.</li> </ul>
<ul style="list-style-type: none"> <li>Actively seek guidance and feedback on progress.</li> </ul>	<ul style="list-style-type: none"> <li>Provide regular and timely constructive feedback on research progress, oral presentations, written <a href="#">work</a> and thesis writing.</li> </ul>
<ul style="list-style-type: none"> <li>Identify relevant academic supports which may be useful from the outset and across the lifecycle of the <a href="#">programme</a> of research including the relevant <a href="#">Subject Librarian</a> and Student Learning Development.</li> </ul>	<ul style="list-style-type: none"> <li>Be generally aware of academic services in Trinity and encourage help-seeking where necessary.</li> </ul>
<ul style="list-style-type: none"> <li>Take responsibility for annual registration and progress.</li> </ul>	<ul style="list-style-type: none"> <li>Regularly review the student's progress.</li> </ul>
<ul style="list-style-type: none"> <li>Take responsibility for writing thesis.</li> </ul>	<ul style="list-style-type: none"> <li>Advise on timing of submission of thesis and discuss nomination of potential examiners with student.</li> </ul>
<ul style="list-style-type: none"> <li>Seek out/follow the regulations (internal and/or external) applying to the research <a href="#">programme</a> and seek clarification when necessary.</li> </ul>	<ul style="list-style-type: none"> <li>Provide information on regulations (internal and/or external) applying to the research <a href="#">programme</a>.</li> </ul>
<ul style="list-style-type: none"> <li>Work according to an agreed timetable and display initiative, <a href="#">commitment</a> and work ethic.</li> </ul>	<ul style="list-style-type: none"> <li>Provide guidance on standards expected for key milestones during research process.</li> </ul>
<ul style="list-style-type: none"> <li>Review working environment (access to space/computer/etc.) and communicate any problems to supervisor.</li> </ul>	<ul style="list-style-type: none"> <li>Advocate for adequate space and resources.</li> </ul>
<ul style="list-style-type: none"> <li>Raise any academic problems /difficulties, so that guidance can be offered.</li> </ul>	<ul style="list-style-type: none"> <li>Support development of realistic/appropriate research <a href="#">programme</a> with clear aims and objectives.</li> </ul>
<ul style="list-style-type: none"> <li>Work towards suitable standard of written and spoken English, for all stages of the research <a href="#">programme</a>.</li> </ul>	<ul style="list-style-type: none"> <li>Support development of written and spoken English for all stages of the research <a href="#">programme</a>.</li> <li>Point to relevant English language support services to facilitate development of academic writing skills.</li> </ul>

# NEW! Research Supervision Agreement

Figure 6

The road to a thesis.  
Travel at own risk.



Citation: Video Journal of Education and Pedagogy 4, 2 (2019) ;  
[10.1163/23644583-bja10002](https://doi.org/10.1163/23644583-bja10002)



# The PhD Survival Guide

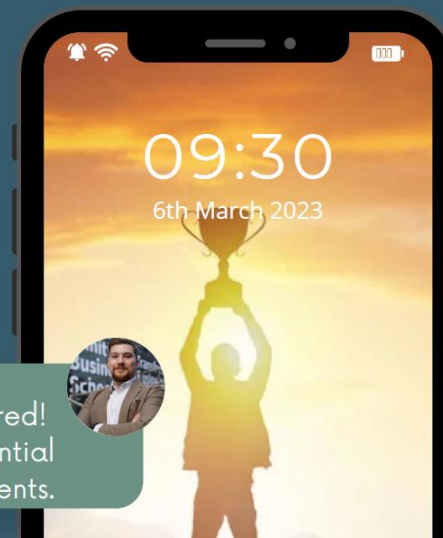
## Top Tips for PhD Students



Hey Oisín, I'm starting my PhD in the fall and don't know what to expect. Have you got any advice?



I got you covered!  
I've put together the essential  
points for all PhD students.







**Maija Taka**  
Academic coordinator,  
researcher

maija.taka@aalto.fi  
@MaijaTaka



**Olli Varis**  
Distinguished  
professor

olli.varis@aalto.fi

Contents lists available at ScienceDirect

**Water Research**

ELSEVIER journal homepage: [www.elsevier.com/locate/watres](http://www.elsevier.com/locate/watres)

**Making Waves: Joining forces for better doctoral education in water research**

Maija Taka<sup>1</sup>, Laura Verbrugge, Olli Varis

*Majaka Doctoral Education Project, Water and Environmental Engineering Research Group, Aalto University, P.O. Box 15200 FI-00076, Finland*

ARTICLE INFO ABSTRACT

Keywords: Water professional

We argue that doctoral education in water needs an elevated focus towards educating game changers who can drive innovation and change towards more sustainable futures across academic and non-academic settings.

<https://doi.org/10.5194/hess-2022-85>  
Preprint. Discussion started: 4 March 2022  
© Author(s) 2022. CC BY 4.0 License.

Hydrology and Earth System Sciences Discussions EGU

**Strengthening interdisciplinary water research – learnings from sports team management**

Maija Taka<sup>1</sup>, Katri Eeva<sup>2</sup>, Maria Törmroos<sup>3</sup>, Olli Varis<sup>1</sup>

<sup>1</sup>Water and Environmental Engineering Research Group, P.O. Box 15200, FI-00076, Aalto University, Finland  
<sup>2</sup>Faculty of Education and Culture, P.O. Box 700, FI-33014 Tampere University, Finland  
<sup>3</sup>Department of Management and Organisation, Hanken School of Economics, P.O. Box 479, FI-00101 Helsinki, Finland

Correspondence to: Maija Taka (Maija.taka@aalto.fi)

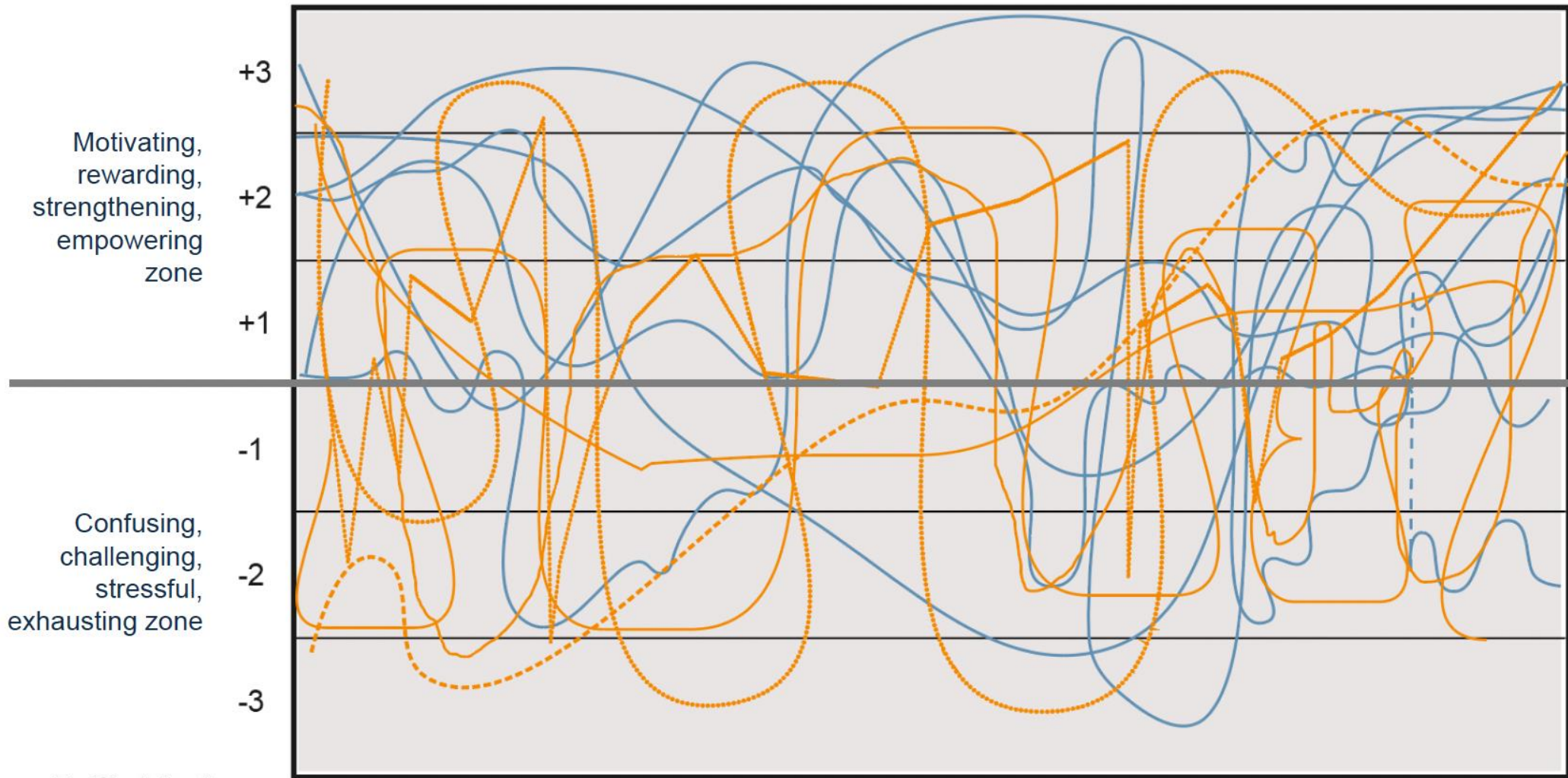
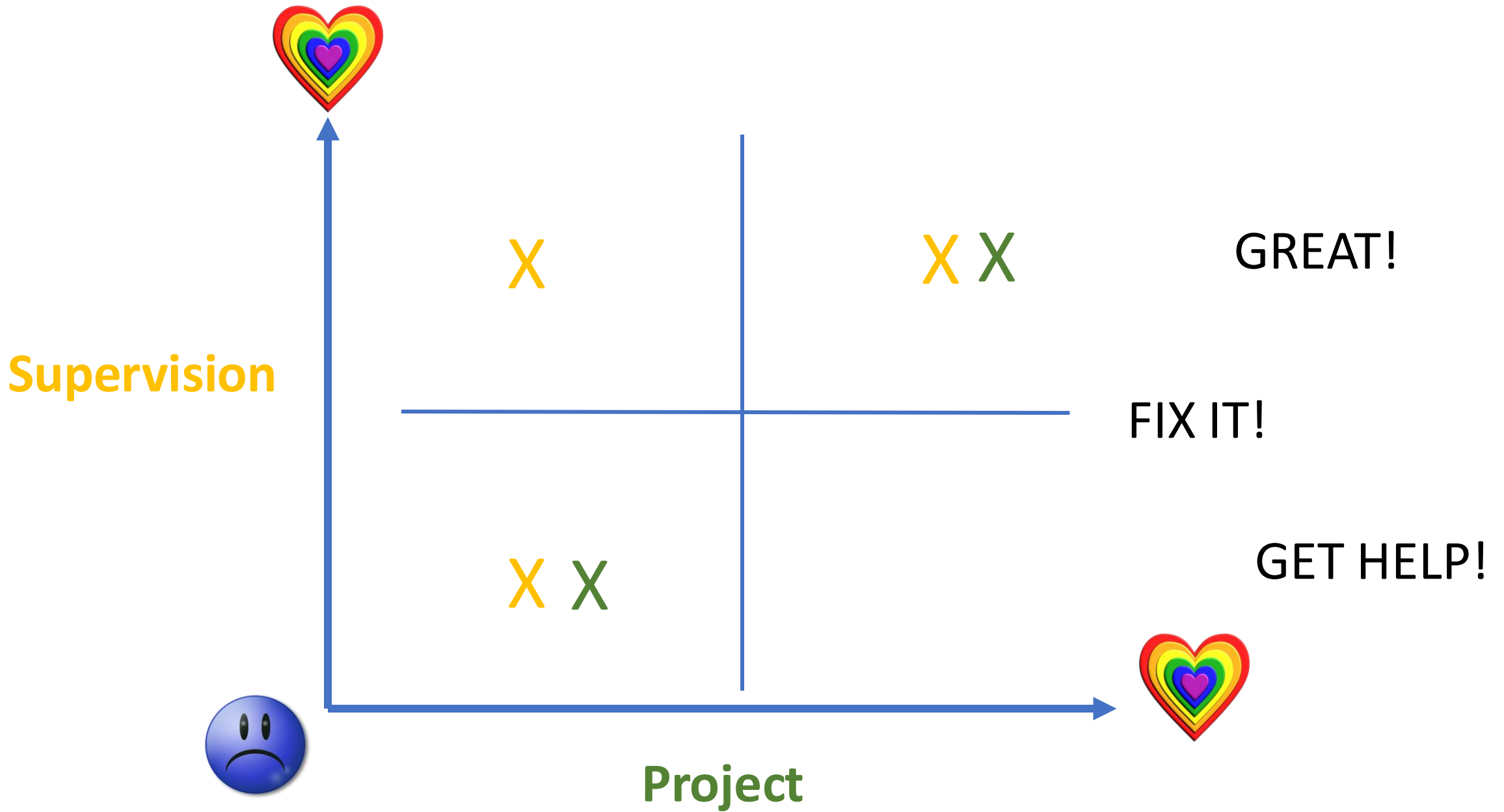


Figure 4

My first  
two chapters  
were coming  
together!



And I  
seemed  
to be  
coming  
apart.



# Maximizing your success



Plan your time



Familiarize yourself with the regulations



Read the handbook!



Academic integrity



Seek support



Top Tips Survival Guide



# Bumps in the Road

- Try to be proactive
- Make requests (e.g., Off Books) through your course director, or your supervisor
- Remember the DTLPG – the next source of help within your School
- Students Union



And  
finally....

Let us know how to improve

Postgraduate  
renewal programme

Email  
communication

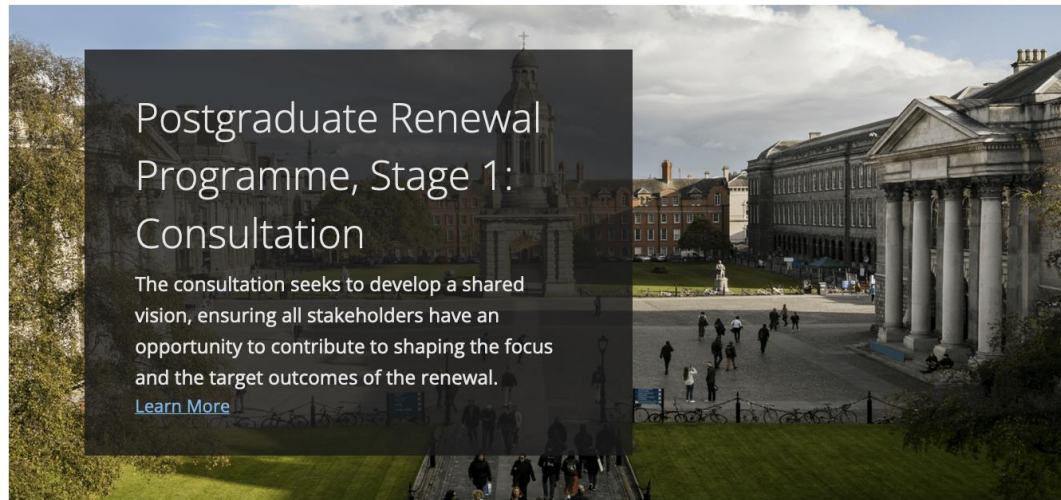


Enjoy and exploit the  
opportunity

# Postgraduate Renewal Programme 2024-25

## Postgraduate Renewal Programme

The College's Strategic Plan 2020-25 identified renewal of graduate education as a key strategic focus over the coming years. The Postgraduate Renewal Programme has started its consultation stage which will involve wide-scale engagement with members of the College community.



Meet the Programme  
Team



View our Resources



Get Involved



- Share your feedback ([pgrenewal@tcd.ie](mailto:pgrenewal@tcd.ie))
- Join our student consultation forum
  - Signal your availability
  - Hourly paid rate for assisting us
- ([pgrenewal@tcd.ie](mailto:pgrenewal@tcd.ie))
- Respond to our surveys/queries!



**Trinity College Dublin**

Coláiste na Tríonóide, Baile Átha Cliath

The University of Dublin

Thank You, Míle Buíochas  
Go n'éirí libh!

